

Curriculum

-To continue to improve, the application of spellings, handwriting and presentation

-To identify disadvantaged children and reduce the gap between disadvantaged children and non-disadvantaged children in maths

-To reduce the on-entry attainment gap between Kew Nursery children and PVI setting children.

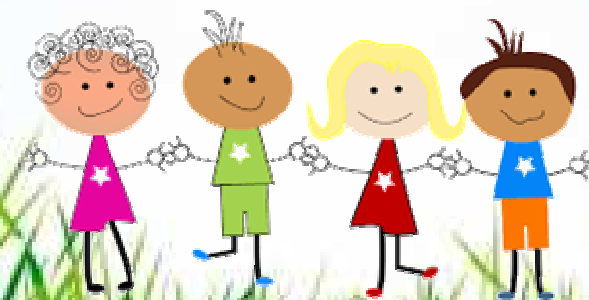
-To implement the Characteristics of Effective Learning across Nursery and Year 1 and embed in Reception.

-To continue to develop the outdoor area

-To evaluate the provision and planned experiences for Expressive Arts and Design



EYFS KEY PRIORITIES FOR 2017-2018



Assessment

-To keep up to date with current EYFSP information (Primary Renewal etc)

- To continue to identify the needs of new children in both N and R through assessment and plan for early intervention as increased number of SEND children

Well being, mental health and wellness

Review staff marking policy

Community

-To implement the Extended Entitlement for eligible children and families in Nursery

- To work with the SLT and Sefton to introduce the provision for the 30 hour offer and identify key issues.