



# Kew Woods News

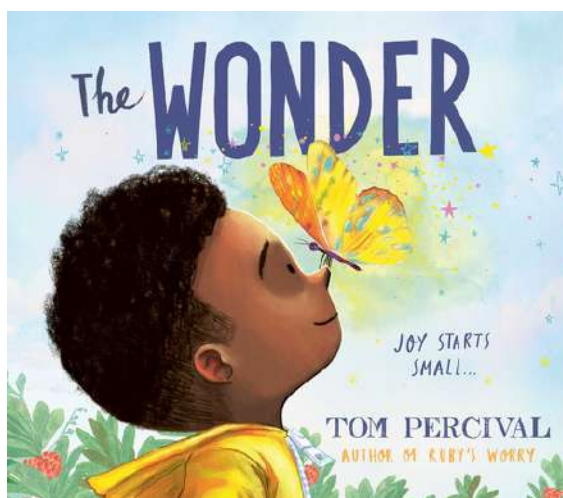
Friday 23rd January



## Kindness Connect Believe

In Monday's assembly, Mrs Greaves shared the book 'The Wonder' written by Tom Percival. This is a poignant picture book that encourages us to take notice of all the wondrous little things that happen to us each day.

On Thursday, we had a celebration assembly. It was lovely to hear how children across school have been impressing their teachers by following our Code of Conduct and showing our values.



**Executive Headteacher**

**Christina Greaves**

**Head of School**

**Leanne Checkley**

**Tel: 01704 533 478**

**[www.kewwoodsprimary.co.uk](http://www.kewwoodsprimary.co.uk)**

### **ATTENDANCE:**

**School attendance this week is 95.1% which is above national average.**

**Well done to class 1K who had the highest attendance at 98.9%**

### **Dates:**

#### **February**

**3rd** - EYFS Stay and Count at 2:40pm

**5th** - Book Fair in school for a week

**5th** - Keep the Wheels Turning Sponsored Bike Ride Event

**6th** - Foodbank Friday

**9th** - Children's Mental Health Week

**9th and 10th** - Year 6 Parents' Evening

**10th** - Safer Internet Day

**11th** - Year 5 Shakespeare Performance

**13th** - MUFTI Day - £1 suggested donation. School closes for half term at 3:15pm





### This Week's Class Dojo Winners

|                   |    |
|-------------------|----|
| Olivia B          | RK |
| Lottie            | RW |
| Jaime             | 1K |
| Sidney            | 1W |
| Richard           | 2K |
| Ellie             | 2W |
| Joseph P          | 3K |
| Isabella C        | 3W |
| Ella C            | 4K |
| Iknoor & Savannah | 4W |
| Tallulah          | 5K |
| Mia C             | 5W |
| Jacob             | 6K |
| Tom               | 6W |

***This Week's Big Question is linked to the British Value of Tolerance:  
'We must always follow our heart and be in service of others'. What do you  
think Ahen means by this?***

BIG QUESTION of the week!  
Here is a summary of what the pupils thought:

1K - We thought that we should always try to be nice and kind and help others where we can.

1W - We believe it is nice to do things for other people and following your heart makes you do the right thing.

2K - It means we should be kind and help people every day by making good choices.

2W- We agreed that it is important to show kindness and care for others, even when it might be difficult to do so.

3K - We believe that following our heart is telling us to be kind and respectful to everyone. We also think that being in service means helping people and listening to them, no matter what they believe.

3W - We said it means believing in yourself and supporting others any way you can. You should follow your own dreams and your heart and it will lead you on to the right path.

4K - It is important to chase your goals, show perseverance, not give up and help people along the way. We also talked about how it is important to let other people help you on the way to achieve your goals.

5K - We believe that we should listen to our heart to make good choices, and we should always try to help others instead of only thinking about ourselves.

5W- We believe it means we should listen to our feelings and try to do what we think is right. It also means we should be kind and help others whenever we can.

6K - It means making choices based on what is right (not just what is easy) and helping others whenever we can, showing kindness and care through our actions.

***Next Week's Big Question is linked to the British Values of Tolerance:  
How do families shape the way we see the world?***

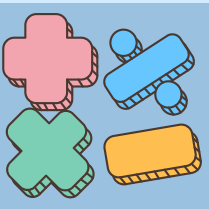




# Year 1 Science

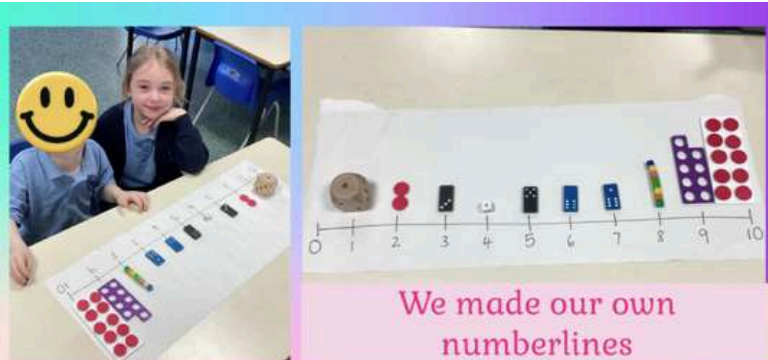


Year 1 have been busy in science measuring the direction of wind using their handmade weathervane!

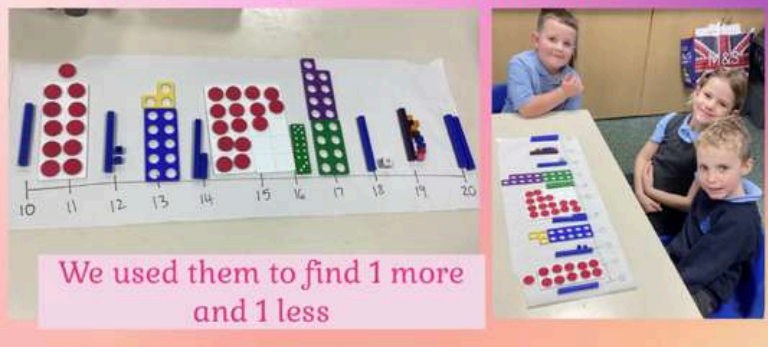


# KS1 Maths

Year 1 have been creative in maths this week, representing numbers in different ways to help them find 1 more / 1 less whilst Year 2 have been using counters to explore turning equal groups into multiplication facts.



We made our own numberlines



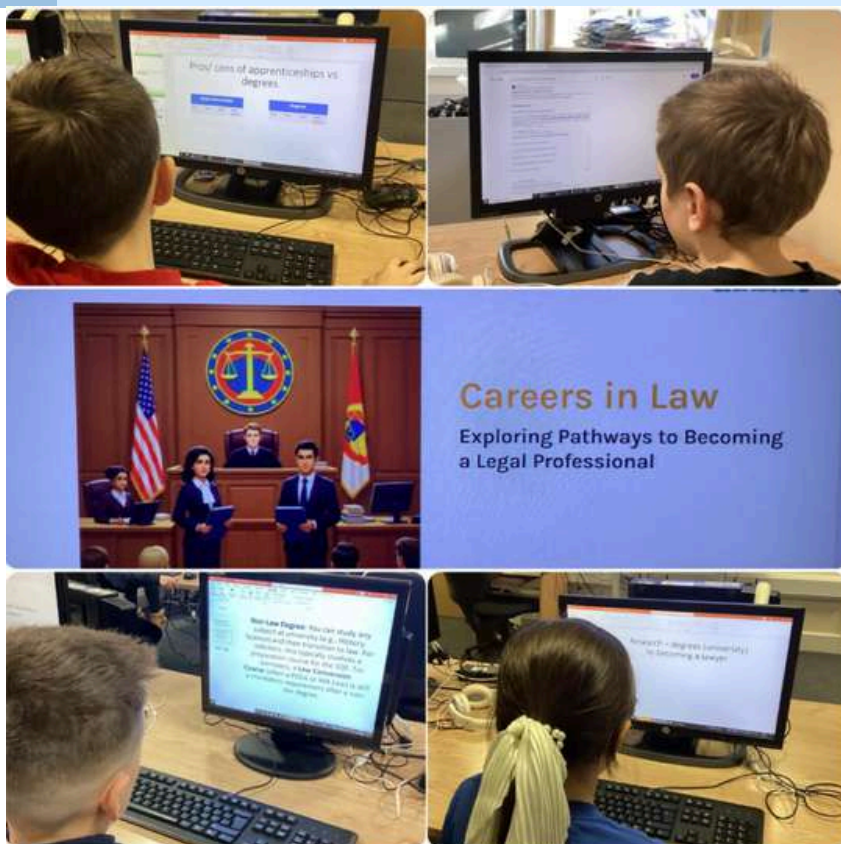
We used them to find 1 more and 1 less







# Careers Curriculum



Year 6 have been thinking about career pathways. They've been exploring how to become a lawyer through either apprenticeships or degrees.



## Year 6 RE



In RE, Year 6 have been learning about what makes a place sacred.

This week, they explored why mosques are special in Islam and used their oracy skills to share their thoughts to create a diamond 9.





## Year 3 Music

Year 3 are really enjoying their ocarina lessons!



## Futsal



On Thursday, some of our Year 6 boys played in a Futsal tournament. They played three matches - won two and drew one - so they won their group and have progressed to the Futsal Finals Night at Stanley High next Thursday. As you can tell, the boys were very excited!

# NURSERY

## newsletter

### This week

This week, we have been reading the story Polar Bear, Polar Bear, What Do You Hear? and looking at the difference between drawing and writing, and how writing tells a story. Nursery enjoyed drawing an animal from the book, and some children had a go at labelling their picture!

In maths, we have focused on the number 4 and explored how we can show the number 4 in different ways. We have also done a number hunt to see how many different number 4s we can find!

### Next week

Next week, we will be reading the book Whatever Next! and using it to inspire our learning. We will also be having a go at making marks for a purpose, exploring different ways to draw and write to share our ideas.

In maths, we will be focusing on the composition of 4, exploring the different ways numbers can be combined to make 4 through practical activities and play-based learning.

### Reminders

Remember to send your home learning to [learningselfie@kewwoods.com](mailto:learningselfie@kewwoods.com)





# What Parents & Educators Need to Know about ROBLOX

## WHAT ARE THE RISKS?

Roblox is an online platform where users can play and create games known as 'experiences' made by other users. Roblox has a large UK audience. ITV News has reported that millions of people in Britain use the platform regularly, with children forming a significant proportion of its users. The sheer scale of it makes it extremely difficult to moderate effectively, creating risks for unsupervised children.

## A PLATFORM RATHER THAN A GAME

Roblox differs from traditional video games in that it hosts millions of user-created experiences rather than a fixed set of developer-produced content. Each experience is self-rated by its creator rather than independently age-rated in advance, as is the case with PEGI-rated games. With millions of user-created experiences, moderation is largely automated which means that inappropriate content may reach younger players and have a harmful effect.

## MATURE CONTENT

With much of Roblox's moderation automated through AI and creators self-certifying suitability, inappropriate content frequently appears on the platform. Some experiences may include content intended for older players. While Roblox has tools to restrict access based on age settings, these systems are not always perfect. Younger players are likely to encounter content you may deem unsuitable.

## IN-GAME SPENDING

Roblox is free to play, but many experiences and cosmetics include optional purchases using Robux, the platform's virtual currency, to get advantages in games. This business model is common across online games, but reporting has highlighted cases where children have spent large amounts of money unintentionally or without understanding the real-world cost.

## RISK OF ADDICTION

Roblox encourages repeated and extended play. Many experiences are made of short tasks, rewards, and progression systems that can prompt users to keep playing for longer periods of time. Some games also use reminders, daily rewards, or timed events to encourage frequent logins. These designs can make it difficult to stop playing. Spending long periods online may affect sleep, schoolwork, or other activities if boundaries are not in place.

## COMMUNICATION WITH OTHER USERS

Roblox includes text and voice features that allow players to chat in shared game spaces. While the platform uses automated filters and moderation tools, media investigations have found that inappropriate and potentially harmful messages can still get through. There are risks that children could be targeted by groomers. In response, Roblox has announced changes to how chat works. The platform plans to use facial age-estimation technology to restrict chat access between adults and children they do not know.

## Advice for Parents & Educators

### USE PARENTAL CONTROLS

Roblox's parental controls provide an important starting point. Linking a child's account to an adult account allows parents to apply spending controls, limit communication features, and review recent activity. Regular supervision, use of parental controls, and conversations with children about what they see online can help reduce the risk of exposure to inappropriate content.

### CONSIDER LIMITING OR DISABLING CHAT

Although Roblox is introducing tighter age-based chat restrictions, some parents and educators may prefer to disable chat entirely for younger children. Children can still play games while communicating with friends they know through other supervised platforms.

### PLAY TOGETHER WHERE POSSIBLE

Playing Roblox with a child can help adults understand the types of experiences available, how monetisation works, and how children interact online. This shared engagement can also make it easier for children to raise concerns if something feels wrong. Parents and educators should monitor all games played on Roblox due to its self-rating nature.

### ENCOURAGE OPEN CONVERSATIONS

Many Roblox experiences are creative and age appropriate, and for many children, the platform is an important way to socialise with friends. Rather than banning it outright, parents and educators should talk openly with children about online safety, spending, and how to respond to inappropriate behaviour.

## Meet Our Expert

Alan Martin is a technology journalist who has written for publications including Wired, TechRadar, The Telegraph, The Evening Standard, The Guardian and The New Statesman.



The National College

See full reference list on our website

@wake\_up\_weds

/www.thenationalcollege

@wake.up.wednesday

@wake.up.weds

Users of this guide do so at their own discretion. No liability is entered into. Current as of the date of release: 21.01.2025





Staff take on the challenge of a  
**24 HOUR BIKE RIDE**

---

Helping to raise awareness of  
**#kNOwKnifeCrime**

---

**THURSDAY 5<sup>TH</sup> - FRIDAY 6<sup>TH</sup> FEBRUARY**



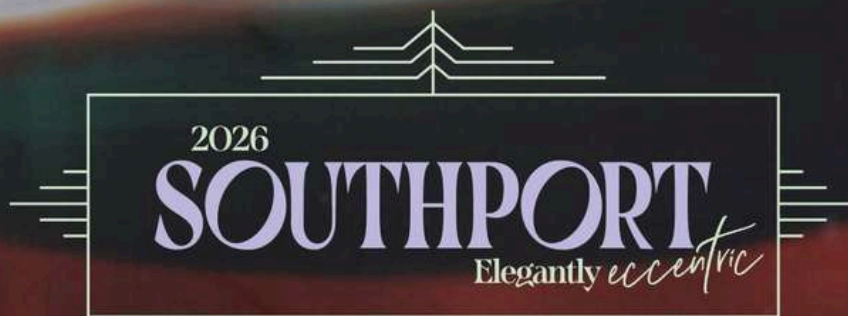
Pupils will be part of the excitement as they join our teachers for a high-energy daytime PE circuit to launch the charity bike ride! While the children power through their challenge, our incredible staff team will keep the wheels turning and continue cycling all through the night to raise awareness of this crucial cause.

All money raised will go towards Mini Medics First Aid training for our pupils. Please bring in any donations you can to support the **#kNOwKnifeCrime** campaign-every contribution makes a real difference. Thank you!



AN IMMERSIVE LIGHT AND SOUND EXPERIENCE  
THAT WILL WRAP YOU IN A RAINBOW

# LIGHT PORT



14 - 16 FEBRUARY | 17.00 - 21.00 | FREE  
LORD STREET, SOUTHPORT  
[WWW.SOUTHPORT2026.COM](http://WWW.SOUTHPORT2026.COM)



METROMAYOR  
LIVERPOOL CITY REGION



Sefton Council





At Kew Woods we use Read Write Inc. Phonics to support in teaching your child to read. Over the half term there will be no reading books or spellings sent home as children will be re-grouped when we return to school. We encourage you to still read with and to your child daily or use the QR codes below to watch Read Write Inc sounds videos and the sound pocket book that has gone home with your child today.

In the appropriate QR code there will be 10 videos for you to watch one a day for the children to gain confidence in the sounds.

## Reception



## Year One



# Piano, Guitar & Singing Lessons

at Kew Woods  
Primary School



## Piano, Guitar and Singing Lessons at Kew Woods Primary School

Link Learning are offering piano, guitar and singing lessons at Kew Woods Primary School. Lessons are taken weekly during the school day during term time. We'll be in touch with you once we receive your registration to answer any questions you may have.

All our tutors are enthusiastic musicians able to teach up to a high level and have recent DBS certificates.

For any queries please get in touch via telephone at 07305507504 or email at [admin@linklearning.education](mailto:admin@linklearning.education)

### What we offer

- Creative tuition tailored to the interests and learning style of the individual
- Digital resource pack
- Termly progress reports

### Tuition price

- Individual - £9 per lesson (15 minute duration)
- Individual - £18 per lesson (30 minute duration)
- Paired - £12 per lesson (30 minute duration)
- Paired - £6.50 per lesson (15 minute duration, guitar and Singing only)

**Please register at [www.linklearning.education/register](http://www.linklearning.education/register)**

LinkLearning is a team of teachers, musicians and artists who believe that every child should have the opportunity to develop and express their creativity.

We work with schools, children's hospitals and community centres to deliver high-quality creative activities that encourage exploration, discovery and experimentation.

In our music lessons we focus on the individual learning styles and interests of our pupils.

To learn more visit  
[linklearning.education](http://linklearning.education)





# EARLY YEARS SEND TEAM

## Parent / Carer Coffee Morning



Has your child got Special Educational Needs/Disabilities?  
Do you want to know more about SEND processes and the support available in Sefton?

Do you want to meet other parents/carers of children with SEND?

Meet with professionals from Aiming High, Early Help, Sefton Parent Carers and the Autism and Complex Needs Teams.

### North Sefton

#### Southport

Linaker Family Hub,  
PR8 5DQ  
10am-12pm

7<sup>th</sup> November 2025  
9<sup>th</sup> March 2026  
19<sup>th</sup> June 2026

### Central Sefton

#### Maghull

Hudson Family Hub,  
L31 5LE  
10am-12pm

28<sup>th</sup> November 2025  
2<sup>nd</sup> February 2026  
22<sup>nd</sup> May 2026

### South Sefton

#### Seaforth

South Sefton Adult  
Education Centre,  
L21 1 EZ  
10am-12pm

12<sup>th</sup> September 2025  
12<sup>th</sup> January 2026  
16<sup>th</sup> April 2026

Take time for you and have a brew! All children welcome.  
For more information please contact:

[Lauren.Wilding@sefton.gov.uk](mailto:Lauren.Wilding@sefton.gov.uk)





# Sefton Family Hubs



## Tea & Toast at Linaker

LET'S  
TALK!



Join us for relaxed weekly sessions where you can talk, listen, and connect with others in your community. Whether you're a teenager, parent or carer, everyone is welcome.

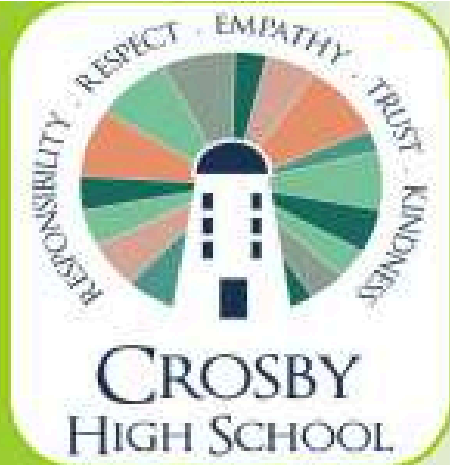
Each week, we chat about topics that matter to you and our friendly staff are here to listen and link you with helpful advice and services.



Scan the QR code or visit  
[www.sefton.gov.uk/familyhubs](http://www.sefton.gov.uk/familyhubs) to  
view our Tea & Toast calendar



**Drop-in every Tuesday and Thursday**  
**9:15am - 10:15am**  
**0151 288 6765**



# Open Day Schedule 2025-26

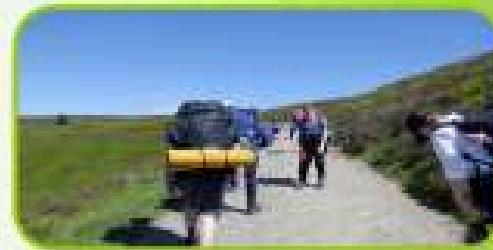
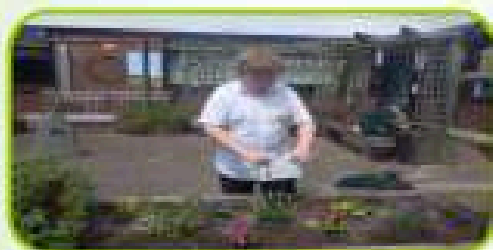
Contact: Paula Morgan

Crosby High School, De Villiers Avenue,

Crosby, L23 2TH Tel: 0151 924 3671

Email: paula.morgan@crosbyhigh.org

If you require further information or wish to book an alternative appointment



**30th September 2025**

**2nd December 2025**

**19th March 2026**

**14th May 2026**

**18th June 2026**

**Tours are at  
1.00pm and 2.00pm**